



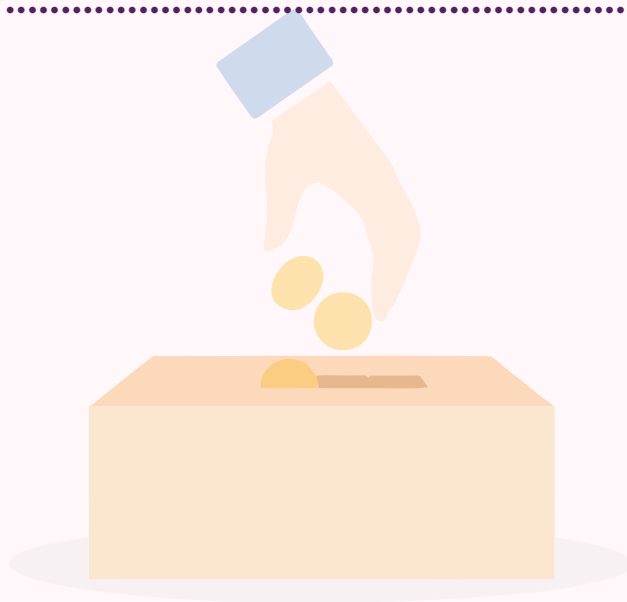
ANFAAL FOUNDATION

HELP OTHERS TO HELP YOURSELF

PROJECT REPORT
2020-2021

TABLE OF CONTENTS

Charity in Quran/ Hadith	1
Need for channelization of charity	2
Anfaal Foundation- The beginning	3
What is Channelizing Charity?	4
The Management	5-6
Paid Staff	7
Types of fund collected	8-9
Case selection & verification process	10
Core area of operations	11
Covid Pandemic	12 to 14
MAKSTARS OLYMPIAD	15
Audit Report F.Y 2020/2021	16
Ejaza & Note of Thanks	17





Holy Quran about Charity

The example of those who spend their wealth in the way of Allah is like a seed [of grain] which grows seven spikes; in each spike is a hundred grains. And Allah multiplies [His reward] for whom He wills. And Allah is all-Encompassing and Knowing.



[Surah Al Baqaraah 2:261]

Imam Ali (A.S) says:

Then Imam Ali (a.s.) endorses the Almighty's words by saying, "One who spends for a good cause is recompensed by Allah in this world and there is also an increase in his reward of the hereafter."

(Al-Kāfi)

The community does its bid by extracting daily Sadqa to help needy members from the community. Millions of rupees are drawn by Mo'mineen and millions receive help through it.



CHARITY IN ISLAM

Islam is a religion which emphasises on the importance of taking care of other creations of Allah swt be it humans, animals, living or non-living. When it comes to helping other human beings, there is much emphasis on being generous and helping the needy. We can find plenty sources that encourage us to do charity;

'The example of those who spend their wealth in the way of Allah is like a seed [of grain] which grows seven spikes; in each spike is a hundred grains. And Allah multiplies [His reward] for whom He wills. And Allah is all-Encompassing and Knowing.'
Surah Al- Baqarah 2:261

Quotes from Imam Ali (as) on the same topic;

"Seek sustenance through charity" Wasa'il ul Shia Vol 6 pg 25

"One who spends in good cause, is recompensed by Allah (swt) in this world and there is also increase in his reward of the hereafter" - Al-Kafi

The generosity of the people of our community is overwhelming, it builds a strong habit to care for the less fortunate of the community and also balances the social cycle of the society. Allah swt in several places explains the benefit of doing so, we can also find several ahadith from the Masumeen on the same.

'And whatever thing you spend, He exceeds it in reward, and He is the best of Sustainers' Surah Saba 34:39

Need for Channelization of Sadqah

When looking at the conditions of the poorer people of our community and the structure of how sadqah flows from the giver to the needy, there were many problems and issues that were noted:

- One in Four beggars in India is Muslim
- Sadqah is regularly taken out and given to the poor, but still there's poverty
- Money was given to people who were not genuinely in need (professional beggars)
- Sehme Sadaat portion of khums was also unfortunately not traceable

Anfaal Foundation was focussed on doing Infaq where it was needed the most, and we noticed that the issue was not with donations coming out of those who are economically stable, but it was how and where this hard earned money was ending up.

The following solution was then drawn to sort this matter.

Channelizing Charity, so that it gets pooled in one place and gets distributed to the right person. Thus enabling utilization of funds to strategically uplift the community.

ANFAAL FOUNDATION – THE BEGINNING

Few years ago, some men from the community sought to find a solution to the problems in the community and do Infaq in the area. They came together with the motto 'Channelise charity' and formed Anfaal. The Foundation works in a professional, dynamic and legally compliant manner.

Some notable features of Anfaal Foundation are:

- Registered under Maharashtra Charity Commissioner (E 33495)
- Registered under 80G Act for tax exemption
- Covers 120 kms around Mumbai
- Over 600 volunteers carrying out the mission

Anfaal Foundation worked hard and created a robust and transparent system to collect Sadqa and funds from community members and have it reach those who are most in need.



GROUP PHOTO TAKEN AFTER ANNUAL MEETING HELD IN 2018 AT SHUSHTARY IMAMBADA, MUMBAI.

WHAT IS CHANNELIZATION OF CHARITY?

To effectively channelize funds, Anfaal focussed on segmenting the various modes by which charity is done in the community, and then made a plan to meticulously collect the amount and every rupee donated from the community in an honest and open manner. The major channels from where donations are:

- Sadqa
- Khums
- Membership
- Fitra
- Fidya
- Kaffara
- Zakat
- Qurbani
- General Donation



SADQA SYSTEM COLLECTION AND DISBURSEMENT

The two step process has shown great positive results, here's a summary of some of the significant work done by the foundation and how the process works.

Collection:

- Free distribution of sadqah boxes within known people (family, friends and community).
- Marketed within the community at community centers, mosques etc.
- 2019 reached 800 families.
- 2020 Over 5000 are actively using the sadqah box.
- Collection rep from Anfaal, collects the amount from the houses, brings to the central office, and the amount is deposited into the bank for disbursement.

Disbursement:

- Applications are received via Volunteers or on Anfaal Foundation Whatsapp number.
- Application is studied, and handed over to investigation team.
- Case is verified.
- Amount is released to the applicant.
- Each case is considered as urgent, and attempts are made to resolve the issue at the earliest.

THE MANAGEMENT

Anfaal Foundation has a core committee which is divided into sub-committees that look after various projects. The group leader is elected by the core committee, holds the office for a tenure of three years. The role is restricted to a maximum of 1 individual and will always be elected from among the members of the Khadim(s) group only. The leader leads all departments (Shoba) and is accountable for all the activities and initiatives taken by each department and their lead(s) in the interest of social welfare and public benefit.

THE CORE COMMITTEE MEETS EVERY FRIDAY TO DISCUSS CASES AND WORK ON PROSPECTS AND PROJECTS.

8 TEAMS Working in a Systematic way to reach a common goal.

IT Team 1

This team has to create avenue from the technical end to automate processes to avoid human involvement up to a larger extent. The IT team is currently working on making the entire application process human-free. To suggest process and operations improvement and foster innovations.

Marketing Team 2

The task of the Marketing Team is to launch programs and drive initiatives that will generate awareness in maximum households across Mumbai and suburbs about Anfaal Foundation and its work. Optimising social media platforms and connecting with the community to spread awareness on how they too can become part of Anfaal. It is to also manage marketing and advertising related vendors, collaboration, budgeting, approvals and timely deliverables.

Education Team 3

The future of the community is to a large extent dependent on the educational growth of its students. The education team works on solutions to current problems, and long-term plans for permanent change in the field of education. In order to achieve this, they work with a team of Subject Matter Experts who research and generate ideas in the field of education for the growth of the community. They work closely with other departments and volunteers to ensure all resources are utilized to achieve successful outreach. The MAKSTARS Scholarship exam and Makstars 30 is one such big step in this area. The team also designs strategies for the overall development of the education sector of the community by organising education fairs, career guidance seminars, motivational talks and other kinds of programs throughout the year.

Sadqa Box (Ghalla) Team 4

The team manages over 2200 Sadqa Boxes spread across Mumbai. The whole process of collection on a monthly basis is coordinated with volunteers on the ground. Besides collection, the team also coordinates with other teams to increase the outreach of the sadqa box system, by digitising it, or giving physical sadqa boxes as per requirement. They also generate a detailed report for area-wise Sadqa Box/ Ghalla.

Investigation Team 5

The most tough task of all at the foundation is carrying out this responsibility of investigation. The team carries out an investigation or delegates the investigation, creates an investigation report and takes an informed decision in line with the pre-approved eligibility and approval criteria and upon the applicant's current situation. They must ensure that the disbursement meets the relevant clauses of Islamic Laws. From organizing and managing the beneficiary application, the investigator must follow a process of verification before deciding and recommending a disbursement – all this in a said period. The team members must collaborate with lead(s) of other departments, such as IT, Marketing, Sadqa Box and Group leader to arrange and validate beneficiary information and support ongoing campaigns and events. The job includes the need to establish an effective line of communication with the beneficiary and to provide status and decision on the submitted application. The investigator must create and present the report on investigation, approval and denial of incoming applications.

Accounts and Legal Team 6

The prime focus of the team is to ensure the funds are segregated and disbursed with great accuracy and integrity. The personnel maintain the principle of transparency of accounts and ensure legalities are maintained. The team must be in touch with the Foundation's Chartered Accountant and ensure that the exchange of funds or any new projects and regular operations are in line with the rules and regulations prescribed by the Charity Commission.

Learning & Development 7

The team is responsible for training volunteers and performing it under the supervision of learned Islamic Training and development is essential to improve the effectiveness of organization and the individuals as well as teams.

Volunteers 8

Anfaal Foundation has around 600 volunteers registered to carry our honorary work handed out to them. The volunteers at the Foundation understand their social and religious responsibility towards the community and are ready for any assigned tasks handed out to them from time to time.

PAID STAFF

In order to function at maximum potential, Anfaal Foundation has hired certain staff members on a paid basis, who are able to provide their time and expertise for the foundation. The paid staff can broadly be divided into 3:

Employees

There are designated salaried individuals who, after a probationary period, are given ongoing assignments, either part-time or full-time, and are paid on a monthly basis. He/she carries out their assigned tasks efficiently and honestly in line with the teachings of the Quran and preaching/ traditions of Prophet (p.bu.h.) and His pure Progeny Aimma a.s. These employees contracted on a long-term basis, are subject to periodic evaluations and performance assessments. They are responsible for the day-to-day functioning of the organization. The salaries of those employed with Anfaal are paid from funds that the Foundation receives through membership or donations and not from the money collected through Sadqa Box.

Field Staff (Ghalla Collection Agents)

Committed individuals possessing basic numeracy and literacy skills, are hired on a long-term basis as full-time employees of the Foundation. They make outbound calls to Sadqa Box owners for monthly call-out and validate Sadqa Box owners. Besides collection they also create/edit/update existing/old information related to the allotment of Sadqa Boxes in their area. They keep in touch with Sadqa Box owners and make reminder calls. After fixing an appointment with the Sadqa Box owner, they count money in the Box in the presence of the owner and then furnish a receipt with the signature of the owner. They safeguard the cash collected and re-route to the head office.

Chief of Operations

As Anfaal Foundation is run by working individuals who are not available full time. So to fulfill the ambitions of Anfaal, to execute its projects, to keep Anfaal growing there is a need of a key individual who works full time to move things ahead smoothly.

To fulfill such need Anfaal has a contract with an entity efficient to run its operations and works on the roadmap designed by the core team.



TYPES OF FUNDS COLLECTED

Funds can be broadly divided into three categories and used for specific purposes.

Sadqa collection -

- Almost 5000 boxes in circulation.
- Regular message reminders are sent to take out sadqa.
- Volunteer periodically collects the amount from homes.

Khums Collection -

- Centralised collection to help Shia Isna Ashari families.
- Used in buying/repairing homes, educational fees, etc.
- Verification criteria used before disbursement of amount.

Monthly membership fee -

- Support office expenses, staff salaries, promotion material etc.
- Unique format for those who want to regularly support the foundation.
- Membership fee starts from INR 300.



Anfaal Foundation is 80G certified.

That means making a donation to Anfaal will get you a deduction of 50% on the donated amount from your taxable income.

Simply ask for 80G receipt after you have made your kind donation.

We also have ijaza to collect khums on behalf of Ayatollah Sisitani (dz)

WE ARE 80G CERTIFIED!
DONATE & SAVE TAX

WHAT IS 80G CERTIFICATE?
80G is a certificate that exempts you part or fully from paying taxes, if you have made donations to charitable trusts that have 80G certificate, they can offer you receipts which can help in exemptions from taxes.

To know more please type 80G and Whatsapp On 77000 14515

#SAVE TAX

77000 14515 | www.anfaalfoundation.com | anfaalfoundation@gmail.com

SADQA

KHUMS

**General
Donation**

FITRA



**C H A N N E L I Z I N G
C H A R I T Y**

STRATEGIC PROCESS TO IDENTIFY THE NEED OF COMMUNITY

PROGRAMS DESIGNED TO UPLIFT OVERALL COMMUNITY

SPECIAL ATTENTION GIVEN TO DOWNTRODEN

**INITIATIVES INCLUDES EDUCATION, PUBLIC DISTRIBUTION
SYSTEM, MEDICAL ASSISTANCE, ETC.**

**ATTENTION GIVEN TO RESOLVE THE CORE REASON
BEHIND POVERTY/DEPENDENCY**

**IN THE LONG RUN, OUR MOTIVE IS TO MAKE COMMUNITY
SELF DEPENDENT**

CASE SELECTION AND VERIFICATION PROCESS.

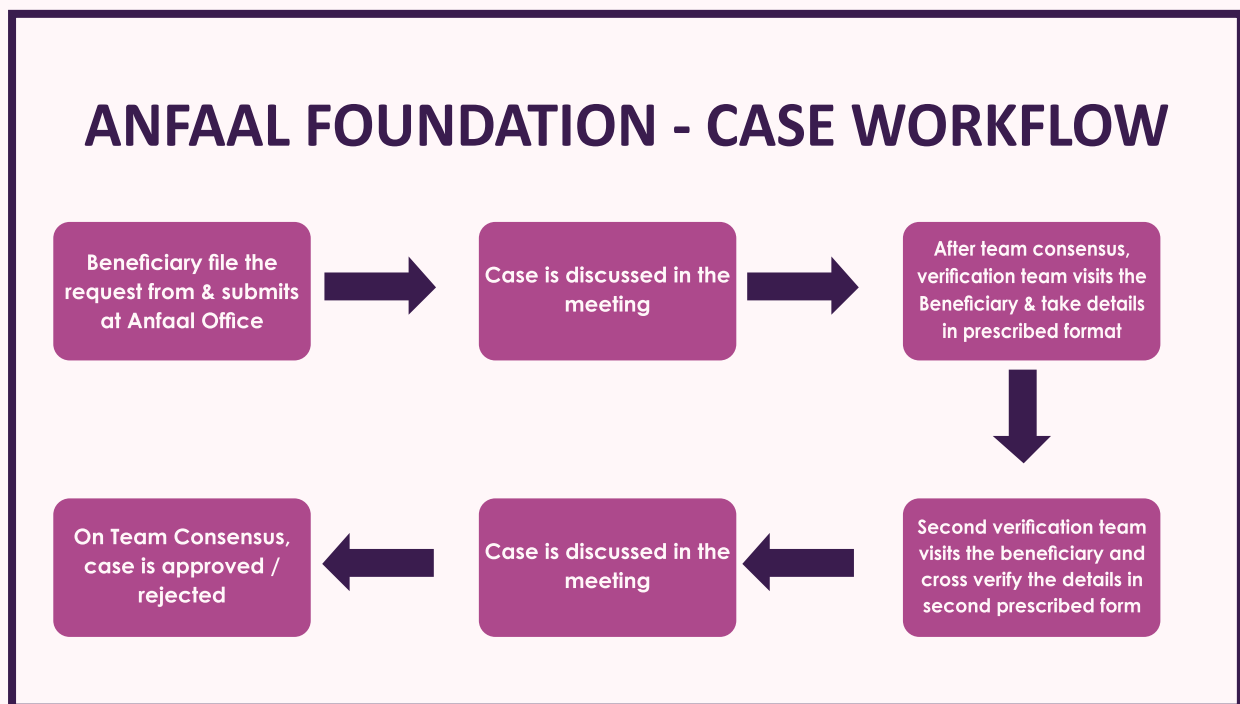
Anfaal Foundation has clear parameters for selecting and verifying cases, which are:

- Education support through fee, books, higher education guidance.
- Widow/ Divorcee lacking support.
- Marriage assistance for girls from poor families.

Double verification is done for each case, this helps in ensuring that the funds are given to those who truly need it. The investigation team carries forward this task, the investigations are run in a dignified manner wherein the beneficiary would not feel uncomfortable or be disrespected.

The overall investigation process is performed discreetly, and only the beneficiary knows about it.

Any help that is rendered to the beneficiary is kept hidden, in order to maintain the dignity of the beneficiary in the society.



CORE AREA OF OPERATIONS:

EDUCATION:

Seeking permanent solution via education, Anfaal focusses on nurturing the talented students and to enable them to excel in their fields of choice. The students are given guidance on various career options available, and courses. This would help them make an informed decision based on their own talents and skills.

Based on the merit of the student and the financial stability of the parents, financial aid/scholarship is provided to offer them a fair chance to succeed.

RATION/ FOOD ASSISTANCE

Monthly ration to the destitute families: There are many widows and elderly people who either cannot go to work or are not skilled enough to find a job to earn their livelihood. Anfaal Foundation has identified and adopted such families and ensured that they do not sleep on an empty stomach. A meal on wheels service to deliver food door-to-door in selected areas.

CONTRIBUTION FOR THE MARRIAGE OF A GIRL CHILD:

Anfaal regularly receives a request from needy families to contribute during their daughter's marriage. On behalf of the bride, the Foundation facilitates Nikah Dinner on the wedding/ Nikah day for up to 250 guests. On a case-to-case basis, financial provision for gifts is also considered.

MEDICAL EMERGENCIES:

Many elders in the community are unable to work. With the little income they make, it is mainly spent on food, which makes spending medicines impossible for them. Anfaal foundation provides monthly medicines to these elders. The foundation also ensures no small surgery is delayed for the want of money. All this, after a detailed investigation of the case.



COVID-19 PANDEMIC



Anfaal Foundations rose to help during the pandemic, by channelizing charity, reaching out to daily wage earners and the needy in Mumbai and MMR for immediate assistance and help. These workers, aged anywhere between 12 to 60+, however, the lockdown failed them to earn their livelihood. In two phases, and with the assistance of more than 300 active volunteers, over 14,000 ration kits were distributed to the underprivileged section of the society, irrespective of religion, caste or creed.

Ration Kits

Ration kits were distributed to daily wage earners (between 12-60+ age range), who were jobless due to lockdown.

- 2 Phase help was provided.
- Over 300 volunteers helped.
- Over 14,000 ration kits were distributed to the underprivileged irrespective of religion, caste, creed.

Ration Kit Contents:

- Rice, flour, lentils, oil, onions, potatoes and spices. Ration kits were improvised upon feedback based on family size and consumption per family:

Kit 1: To meet consumption need of 1-4 members.

Kit 2: To accommodate more than 5 members.

The contents of the kits were purchased in bulk, and packaged by volunteers.

Teams were trained to maintain hygiene, comply with social distancing and safety instructions during the process.



Cash Help

Over 1000 families received cash help of INR 1500 to meet their daily expenses.

A COVID-19 Helpline Service

Free medical consultation helpline was set up from mid-April 2020

Objective: to share information on basic safety during the pandemic in ways of simple do's and don'ts. Address myths and confusion with regards to corona virus.

Medical consultation was managed in association with Dr. Shezanali Hemani, MBBS

COVID-19 PANDEMIC

Burial Assistance

Anfaal Foundation Helped in burial of the deceased who passed away due to and during the pandemic.

Internal procedure manual was created under guidance of Maulana Faizan Ali Jawwadi, to ensure all Islamic Laws of burial.

Dr. Shezanali Hemani guided in following the Dead Body Management procedural manual released by G.O.I Ministry of Health & Family Welfare Directorate General of Health Services (EMR Division).

Team was formulated to manage

- Telephonic requests
- Area volunteers to help with burial
- Coordination team to work with Qabrastan Mgt. Committee across Mumbai & MMR

On receiving the request over phone, the team coordinated the burial of the deceased in absence of an heir. The team was able to help several families in under this project

COVID-19 Care and Isolation Center

The demand for care and isolation centres was on rise with an increase in covid positive patients.

Anfaal Foundation reached out to the resources in State Administration and a property at Govandi was set-up as an isolation center.

Salient Features of Isolation Center:

- 100 beds - Separate ladies and gents' section with 5 washrooms on each side -
- Exhaust fans installed for ventilation and circulation of air
- A/C facility for doctors and fever clinic
- Hot and cold-water dispensers
- Tea served twice a day along with lunch and breakfast at the facility.

The facility was run in collaboration with the municipal corporation.

40% of the beds were reserved for Anfaal Foundation

All infrastructure was raised, including procurement of beds, mattresses, exhaust fans, air-conditioning units, water dispenser, etc

Setting up the kitchen, daily ration, vegetables and cooking were managed by volunteers from Anfaal Foundation.

COVID-19 PANDEMIC

Emergency Oxygen Cylinder Services

Free oxygen cylinders were distributed when cases rose. This helped save lives of those who needed assistance till they were able to secure a bed at the hospital.

Areas Covered: Govandi, Kurla, Dongri, Malad, Mira Road, Nalasopara, and Mumbra.



Oxygen Kit contents: Oxygen Cylinder, Oximeter, PPE kit, mask & pipe, pressure gauge, hand gloves.

Items were procured by contacting multiple vendors.

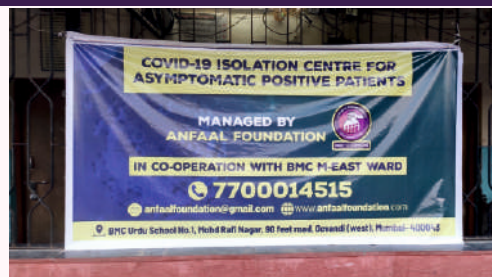
Interactive Voice Response (IVR) system was set up on the call centre number 7700014515 to ensure the emergency calls are diverted and handled by a subject matter expert.

Qualified doctors were on boarded for virtual assistance

A consolidated image of all NGO's providing oxygen cylinders was released by Anfaal Foundation which helped citizens from all faiths across the city

FROM OUR GALLERY

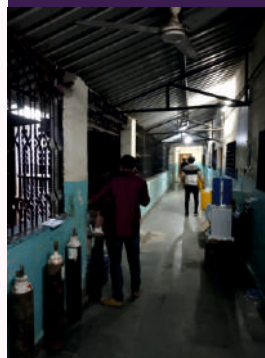
100 BEDDED ISOLATION CENTER FOR SUSPECTS



SUPPLIES TO AUTHORITIES



OXYGEN SUPPLY



14000 RATION KITS



1000 FAMILIES- CASH HELP



MAKSTARS ANNUAL OLYMPIAD

Maulana Kalbe Sadiq Talent Reward & Scholarship

Anfaal as an associate partner, along with other sponsors, associates and affiliates took a giant leap in the field of education.

Named after

Marhoom Dr Kalbe Sadiq Sahab, MAKSTARS,

a program initiated to spot top students from across the country. It aims to search for and encourage young talent with scholarships and mentoring.

MAKSTARS SCHOLARSHIP 2021

I feel that
our survival
depends critically on excellence in
modern education
-Padma Bhushan
Maulana Dr. Kalbe Sadiq

CHANCE TO WIN SCHOLARSHIP

WORTH
₹ 50 LAKHS

**Maulana Kalbe Sadiq
Talent Rewards & Scholarship**
For self-analysis, academic enhancement,
winning rewards and much more...

For all students studying in
Class V to X
Pan India | All Boards

REGISTER ONLINE BEFORE
7TH MARCH 2021
WWW.MAKSTARS.IN

ONLINE EXAM DATE:
14th March 2021
For Enquiries -
info@makstars.in
+919167705048

As a social welfare group, we know that an inspirational platform not only provides a vision to the students to apply their talent and win appreciation but also it nurtures their mind for higher goals in future.

In our experience, over the period we have seen some students progressively distinguish themselves from others and successfully achieve their desired goals in life. There is a scope for thousands of students to take place not only among toppers in the challenging examination like IIT-JEE (Main+Advanced), Pre-medical entrance examinations, KVPY and NTSE, but also to become medalists in various International Olympiads.

Over time, Anfaal identified that some students “achieve it” while others who are equally bright “do not”. Why is it?

What are the achievers doing differently?

The success stories of these students will help us identify all the essential aspects and set vital efforts in each characteristic.

One of the major pillars of teaching methodology is its strong SYSTEM of TESTING in the diverse student group enrolled from India-wide; extraordinary records in both Ranks & Selections proves it accurate.

MAKSTARS has developed this unique exam with the help of highly experienced academicians of IIT-JEE (Main+Advanced), Pre-Medical, Pre- Nurture and Career Foundation. All focused and earnest students will find this exam full of benefits that will boost their academic competitive abilities and help them grow in the competition.

These students will then be sent to a hostel and provided with the best coaching facilities to prepare them to excel in various competitive exams held in India. From medical to administrative services, these students will be trained to make it a mission to reach the top in various important fields. All their expenses will be taken care of by Anfaal Foundation with the support of our partners and affiliates. The exams will be held annually to identify the students and keep the cycle running. Around 2500 had registered for the entrance exam held early this year where 1200 student finally sat for the exams. The results of the exams are awaited only after which the historic first batch will be announced.

Career Guidance:

Besides monetary help, Anfaal regularly conducts career guidance seminars and invites professionals from various fields to inspire and guide the students of class 7th onwards. These early coaching and mentoring helps them to identify their strength and better plan their future.

AUDIT REPORT F.Y. 2020-2021

SUMMARY OF INCOME AND EXPENDITURE

TOTAL RAISED

Opening Balance	₹ 7,64,044.00
Sehme Imam	₹ 31,23,405.00
Sehme Sadaat	₹ 49,63,360.00
Sadqa	₹ 31,69,159.00
Membership	₹ 61,200.00
Pendamic fundraising	₹ 26,08,696.00
Ijtemai qurbaani	₹ 10,65,725.00
Mahe Ramzan Fundraising	₹ 2,19,350.00
TOTAL	₹ 1,59,74,939.00

TOTAL SPENT

Education Projects	₹ 24,97,638.00
Medical Aid	₹ 20,14,760.00
Covid-19 Relief	₹ 51,72,394.00
Qurbaani	₹ 18,00,000.00
House Repairing	₹ 7,51,350.00
Girl Child Wedding	₹ 3,41,000.00
Ration Room Rent/Deposit	₹ 20,63,438.00
Administrative expenses	₹ 9,09,297.00
TOTAL	₹ 1,55,49,877.00

CLOSING BALANCE 31-03-2021

₹4,25,062.00

EJAZA TO COLLECT KHUMS ON BEHALF OF GRAND AYATOLLAH SISTANI (DZ)



Anfaal Foundation

Registration No.: E33495(m)

E-MAIL: anfaalfoundation@gmail.com

2, Hirji Govindji Building, 1st floor, Room No. 18, Sir JJ Road, Nagpada, Mumbai 400008, India

و قمر حضرت آیت الله العظمیٰ سید علی حسینی سیستانی مدظلہ العالی

بجرت الاسلام والسلمین سید جواد شریانی نذرہ علیہ السلام

کراش فعالیت ای انجام شدہ توسط موسسہ انفال و درخواست اجازت استاده از رجوعت شری رحیم مبارک المم علیہ السلام

سلام علیکم ورحمت الله وبرکاته

در سایه رحمت الهی، توفیقات روز افزون شما را از خداوند متعال می خواهیم و از خداوند سلاستی و طول عمر معظم له را دعاگو هستیم .

ابتدا می خواستیم شما را با موسسه انفال آشنا کنیم

موسسه انفال متشکل از گروه های مردمی شیعه است که این گروه با فعالیت های خود خواستار ارتقای جامعه تشیع در همه ایام زندگی و خدمت به جامعه تشیع است .

موسسه انفال در حال انجام فعالیت های زیربنایی برای جامعه است. برای کسب نتایج خوب و تحول عمیق متفقد هستیم که استفاده بهینه از وجوهات شرعی ایزاری موثر برای فعالیت های زیربنایی جامعه می باشد. مثلا ما فقط برای تحصیل در مدرسه یا دانشگاه یا مراکز آموزش شیعه نمی کنیم بلکه فعالیت های زیربنایی از جمله آماده کردن دانش آموزان و دانشجویان برای مسابقات علمی هم همت گماشته ایم. ما برای کلاس هشتم به بعد برای دانشجویان کلاسهای ویژه برای آمادگی مسابقات علمی در سطح ملی با نظارت متخصصین آموزش و پرورش، مسابقات مسر درون سیمسی برای ارتقای سطح آموزشی و تربیتی برگزار می کنیم.

همچنین امکان درس خواندن در خانه و آموزشی کردن محیط خانه، سپس امتحان دادن و گرفتن مدارک رسمی هم در برنامه ما جایگاه ویژه دارد. از این برنامه دختران ما بیشترین استفاده را خواهند برد و از آلودگی های محیط غیر سالم هم تا حدی مصون خواهند ماند.

For ANFAAL FOUNDATION

Authorized Signatory



Anfaal Foundation

Registration No.: E33495(m)

E-MAIL: anfaalfoundation@gmail.com

2, Hirji Govindji Building, 1st floor, Room No. 18, Sir JJ Road, Nagpada, Mumbai 400008, India

همچنین فعالیت های مشابهی در زمینه های دیگر معیشتی از جمله مواد خوراکی و نیازهای پزشکی و کارآفرینی و مهارت آموزی انجام می شود.

ما امیدواریم که این میسسه در آینده نه چندان دور پشتونله محکم برای مذهب تشیع و آثار تابناک برای شیعیان را در پی خواهد داشت .

در حال حاضر موسسه انفال با کمک های مردمی و گمانهزیه کردن صدقات مستحبی این فعالیت ها را تا حد ممکن انجام می دهد تا گزارش ویز فعالیت با ذکر دخل و خرج پیوست این نامه می باشد.

موسسه انفال در حال حاضر تقریبا ۱۵۰ دانش آموز را در ۴ منطقه یعنی که جمعیت شیعیان نسبتا متراکم هست، پوشش داده است.

بفر از هزینه های آموزشی معمول، موسسه انفال حمایت های مالی دیگری نیز برای این دانش آموزان و دانشجویان در نظر گرفته است تا بتوانند هزینه های آموزش عالی پزشکی، فنی و مهندسی را تأمین کنند .

به فضل الهی موسسه نیازهای پزشکی و مواد خوراکی بیش از ۱۰۰ خانواده را بصورت ماهانه تأمین می کند. همچنین موسسه انفال برخی از نیازمندان را در نوساز کردن خانه ها کمک کرده و برای برخی افراد خانه جدید خریده است .

اگر شما می خواهید اجازه ای برای مصرف وجوهات در این امور به موسسه انفال اعطا نماید تا بتوانیم از مقلدین آقا خمس دریافت کرده و در موارد مذکور برای پیشرفت جامعه تشیع استفاده نماییم.

سید علی

مجازید به مدت دو سال از تاریخ
ذیل، به صرف نصف سهم مبارک شما از
در مورد حقوق و نصف دیگر آن را به دفتر
اقا مدظله ارسال و رسید به تمام مبلغ دریافت
نمایند. دو اردم جمادی الثانی ۱۴۴۳ هـ ق
له هزار و چهارصد و سی و چهار
مراست حب در خاتمه مدرسه سید و دو سال دیگر
نیز تمدیدی برود (۱۴۴۳ هـ ق و
۱۴۴۴ هـ ق) خداوند بر وفق شما را برادران را

For ANFAAL FOUNDATION
Authorized Signatory

THANK YOU

We thank Allah (SWT) for giving us an opportunity to serve mankind.
We thank Holy Prophet Mohammad (S.A.W.S) & his holy household (P.B.U.T) for showing us the actions which pleases Allah the almighty.
We thank momineen who helped us by fulfilling their duty towards other momineens.
May Allah (SWT) always have mercy on us and our marhoomeens. Elahi Ameen



ANFAAL FOUNDATION

HELP OTHERS TO HELP YOURSELF

www.anfaalfoundation.com

Office address:

5, Ground Floor, Plot- 64/69, New Sitafal waadi,
Dr Mascarenhas Road, Narialwadi, Oppsite Khoja
Shia Isnaashari Cemetery Arambaugh, Mazgaon,
Mumbai- 400010 Maharashtra, India

Mobile No:

+91 77000 14515

anfaalfoundation@gmail.com

